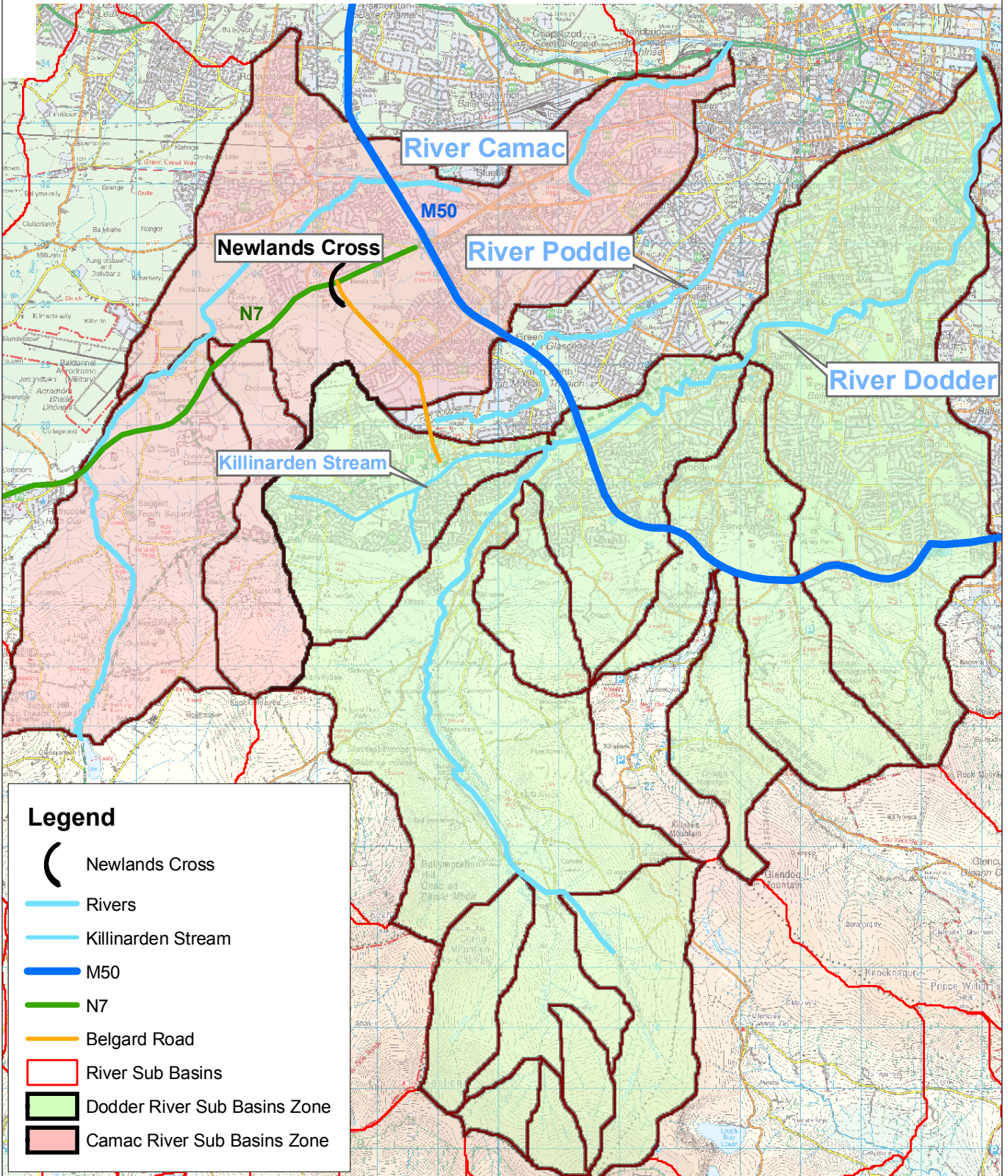


Not To Scale

Ordnance Survey Ireland Licence Number  
EN 0002807 © Government of Ireland



## Regional Surface Water Catchments

# ARUP

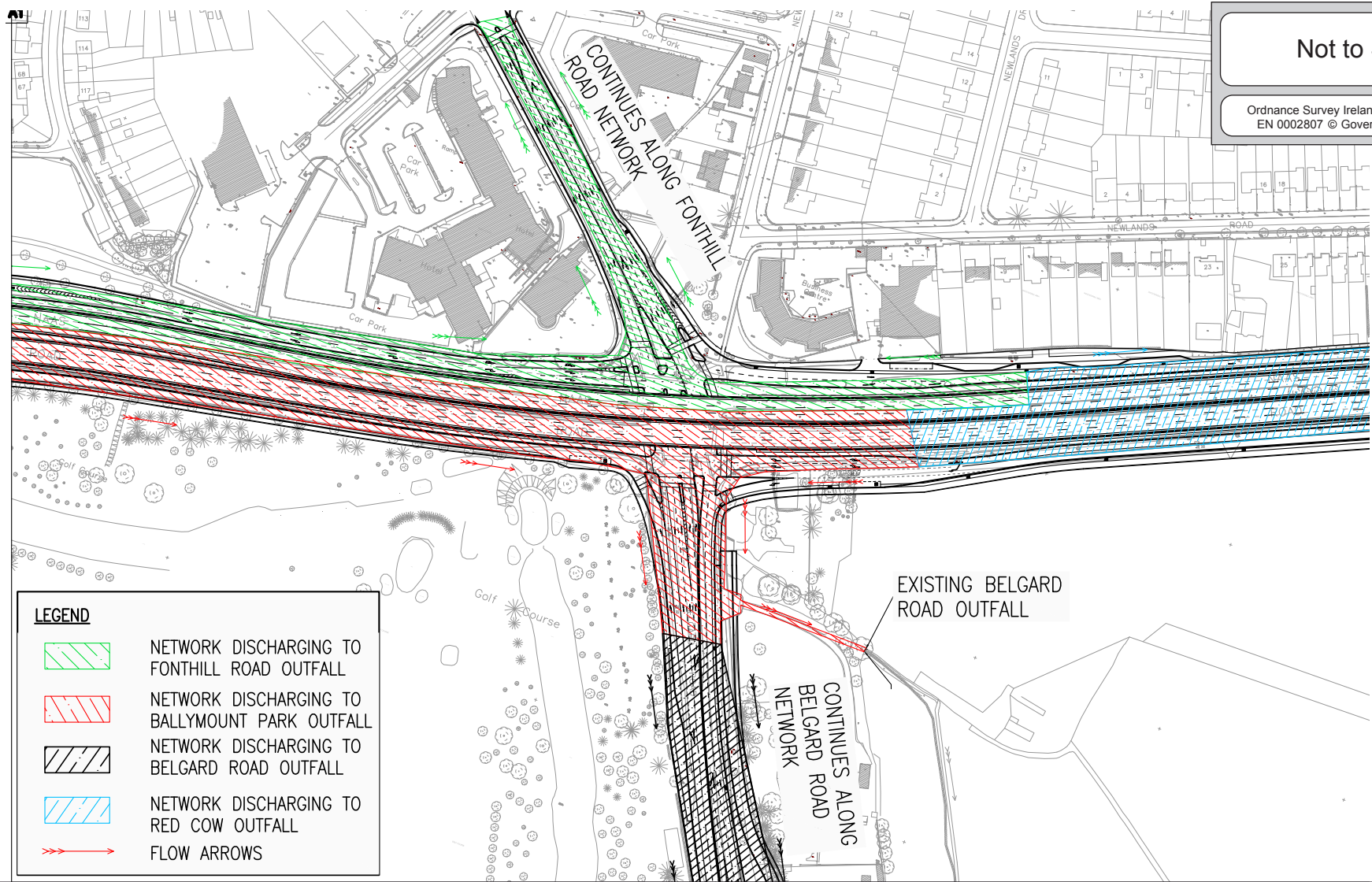
Newlands Cross Upgrade EIS

D4556.11

December 2007

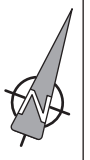
Plates 14.1





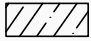




Not to Scale

Ordnance Survey Ireland Licence Number  
EN 0002807 © Government of Ireland



**LEGEND**

-  NETWORK DISCHARGING TO FONTHILL ROAD OUTFALL
-  NETWORK DISCHARGING TO BALLYMOUNT PARK OUTFALL
-  NETWORK DISCHARGING TO BELGARD ROAD OUTFALL
-  NETWORK DISCHARGING TO RED COW OUTFALL
-  FLOW ARROWS



Existing Surface Water Drainage

---

Newlands Cross Upgrade EIS

---

D4556.11 | December 2007 | Figure 14.2

