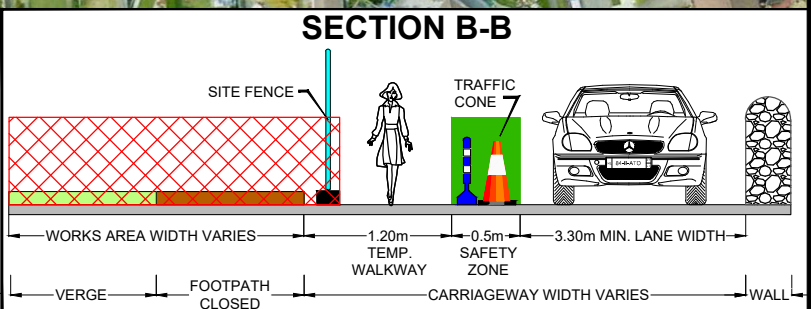
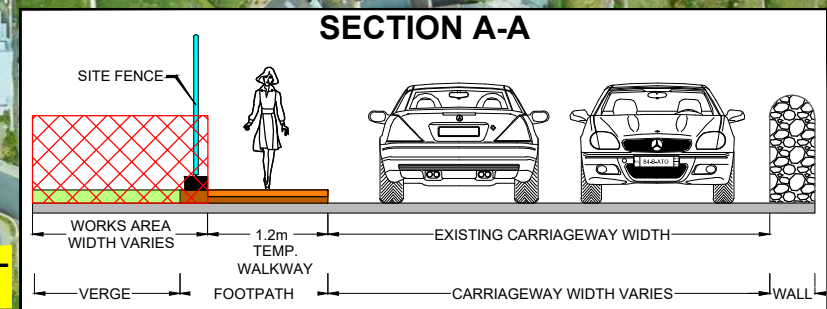
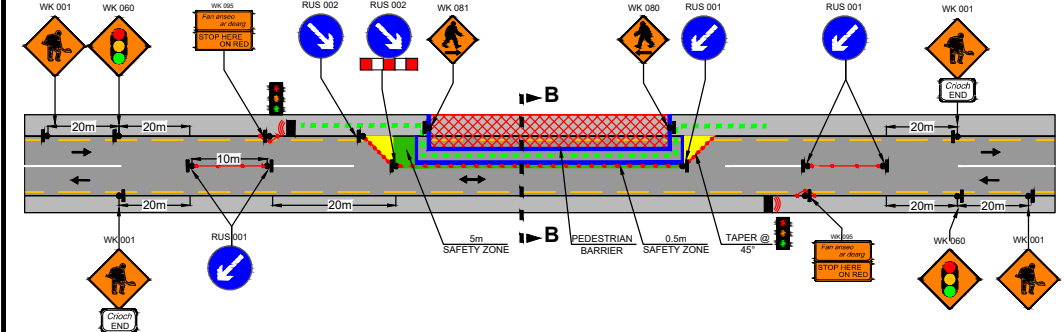


WHITECHURCH STREAM FLOOD ALLEVIATION SCHEME - AREA 4 & AREA 5 - ROAD CLOSURE TM LAYOUT



2 WAY TRAFFIC LIGHTS TM LAYOUT



DESIGN PARAMETERS			SAFETY ZONE			TEMPORARY SIGNS			CONE SPACING AND SIZE			RATE OF TAPER			LAMP SPACING			TRAFFIC MANAGEMENT SYSTEM		
Road Lvl(Sub)	Roadworks Type	Speed Limit (km/h)	Min. Lane Width (m)	Longitudinal (m)	Lateral (m)	Set Back (m)	Distance (m)	Number	Min. Size (mm)	Sign Visibility (m)	Longitudinal (m)	At Tapers (m)	Min. Height (mm)	Taper at H/S (m)	Taper at Lane (m)	At Tapers (m)	Longitudinal (m)	Method	Coned Area Length (m)	Max. Traffic Flow (veh/h)
1 (i)	A	30	3.00	0.5	0.5	-	10	2	450	25	3	1	750	-	1 in 1	3	6	Road Closure	n/a	n/a
1 (iii)	A	50	3.00	5	0.5	-	20	2	600	50	3	3	750	1 in 5	1 in 5	6	6	Road Closure	n/a	n/a

NOTES:

- ALL INFORMATION CONTAINED IN THIS DRAWING SHOULD BE CHECKED AND VERIFIED BY CONTRACTOR PRIOR TO ANY STAGE OF CONSTRUCTION.
- ALL WORKS ARE TO BE CARRIED OUT IN ACCORDANCE WITH LOCAL AUTHORITY REQUIREMENTS AND ARE TO BE INCLUDED IN THE SITE-SPECIFIC SAFETY & HEALTH PLAN.
- CONTRACTOR TO CARRY OUT A SITE RISK ASSESSMENT PRIOR TO THE INSTALLATION OF ANY TRAFFIC MANAGEMENT PLAN TO ENSURE THAT CONDITIONS REFLECT THOSE CONSIDERED FOR DESIGN POST SUBMISSION.
- CONTRACTOR SHALL BE RESPONSIBLE FOR THE PROVISION OF RAMP ACCESS AT ANY CHANGE IN ROAD SURFACE LEVEL WHERE TRAFFIC RUNS ON A TEMPORARY SURFACE.
- THIS TRAFFIC MANAGEMENT PLAN MAY ONLY BE IMPLEMENTED BY A TTOS WHO MUST CARRY OUT A RISK ASSESSMENT BEFORE IMPLEMENTATION. TTOS MUST BE IN POSSESSION OF CSCS CARD "SIGNING, LIGHTNING AND GUARDING AT ROAD WORKS" CONSTRUCTION REGULATIONS 2006.
- EXACT SIGNS POSITIONS TO BE AGREED ON SITE.
- ACCESS TO BE MAINTAINED TO ALL DWELLINGS / BUSINESSES AT ALL TIMES.
- SITE SIGNING AND MAINTENANCE OF THE TRAFFIC MANAGEMENT LAYOUT IS TO BE CONDUCTED ON A DAILY BASIS TO ENSURE THE SAFETY AND INTEGRITY OF THE DESIGN.
- ALL TEMPORARY FOOTWAYS MUST HAVE A GOOD QUALITY, EVEN SURFACE AND BE MAINTAINED FREE FROM OBSTRUCTION.
- PEDESTRIANS TO BE PROTECTED FROM WORKS AREA BY PEDESTRIAN BARRIER SYSTEM.
- BANKSMAN TO MANAGE SITE ACCESS/EGRESS DURING WORKS HOURS.

LEGEND

- TRAFFIC CONES
- SIGN LOCATION
- WORKS AREA
- SAFETY ZONE
- SITE FENCE/BOUNDARY
- PEDESTRIAN ROUTE
- SITE ACCESS GATE

GARY KEVILLE TRAFFIC MANAGEMENT LTD.
Rosemount Business Park, Dublin 11, Co. Dublin, Ireland
Tel: (+3531) 667 4322; Email: info@gktm.ie; Visit us at: www.gktm.ie

CLIENT: OPW
Oifig na nOibríochta na Poiblí
Office of Public Works

DESIGNED: SS **SCALE:** NTS
DRAWN: SS **PROJECT TITLE:** WHITECHURCH STREAM FLOOD ALLEVIATION SCHEME
VERIFIED: BJ **DATE:** 24-04-2024
APPROVED: BJ **DRAWING NAME:** AREA 4 & AREA 5 - ROAD CLOSURE TM LAYOUT

Rev. No.: 1 **Revision Details:** Removed Massguard & amended signage. **Rev. Date:** 25-04-2024

STAGE: CONSTRUCTION **DWG. No.:** JC 5580-00-15 **REV:** 1