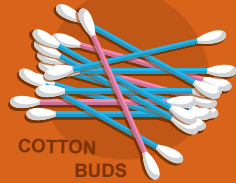


THESE ITEMS BELONG IN THE BIN NOT IN THE TOILET!



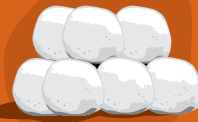
NO



COTTON
BUDS



BABY
WIPES



COTTON
BALLS



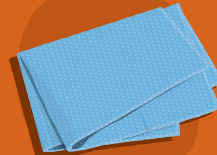
SANITARY
TOWELS



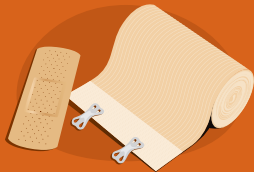
PAPER
TOWELS



CLEANING
WIPES



RAGS



BAND AIDS &
PLASTERS



NAPPIES



YES



Visit
www.southdublin.ie
or call
01 414 9000
for more
information.

THINK RUBBISH BIN NOT TOILETS!



TOILETS ARE NOT RUBBISH BINS!

Toilets and sinks are not for nappies, cleaning wipes, sanitary towels, dryer sheets or a second method of waste disposal for your food scraps and cooking grease.

Do you know wet-wipes turn up as rope wrapped around pumps in waste water treatment plants and are the most likely cause of blockages in many household sewers!

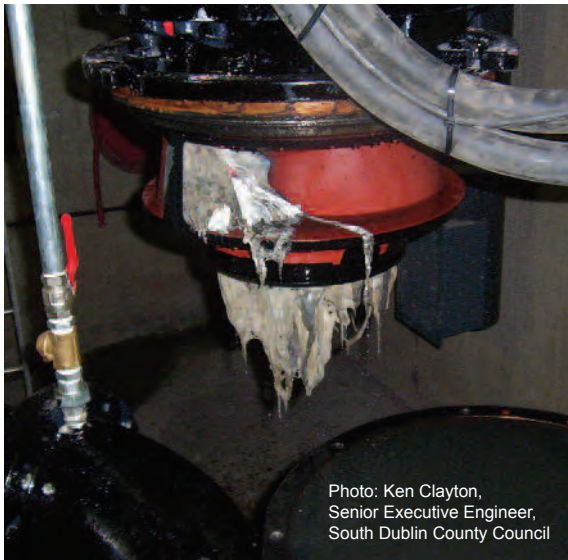


Photo: Ken Clayton,
Senior Executive Engineer,
South Dublin County Council

Debris and other non-water soluble items that manage to make it through the public main sewer can lead to overflows and can damage the public Waste Water Treatment Facility. They can cause harm to human health and our local environment.



The Drainage Maintenance Section estimates that each time they respond to a sewer back-up it cost €500 in labour and equipment. This does not take into account the damage caused at waste water treatment plant by items that manage to make their way through the system.

A blocked drain due to the improper disposal of non-biodegradable products can cause serious plumbing problems resulting in flooding, costly clean ups and repairs for your household.

Don't throw your money down the drain!



IMPROPER DISPOSAL OF WASTE THROUGH A TOILET IS ILLEGAL AND CAN LEAD TO A FINE.

Please **DO NOT dispose** of unwanted household items down the toilet such as:

- Baby wipes
- Nappies
- Face wipes
- Rags
- Cotton buds
- Sanitary towels
- Non biodegradable hygiene products or thick cotton even if they are labeled flushable

Dispose of organic body waste and toilet paper only. Everything else should go into the bin!

Do remember that when it comes to disposal; toilets and rubbish bins are not all the same.

IF IT ISN'T BIODEGRADABLE, PUT IT IN THE BIN.



THINK RUBBISH BIN NOT TOILETS!